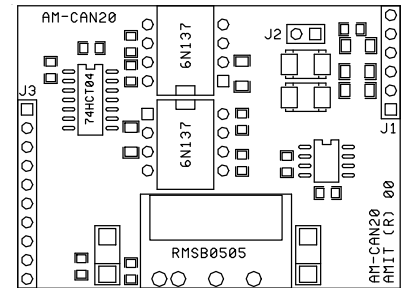


# AM-CAN

Communication Module

- CAN interface communication module
- TTL control
- Power supply +5 V
- Soft overvoltage protection



## TECHNICAL DATA

|                        |                       |
|------------------------|-----------------------|
| Overvoltage protection | Transil 600 W         |
| Galvanic insulation    | Yes *)                |
| Terminating resistor   | 120 Ohm on module     |
| Power supply           | 5 V DC $\pm$ 5 %      |
| Control signals        | TTL                   |
| Operating temperature  | 0 to 70 °C            |
| Max. ambient humidity  | < 95 % non-condensing |
| Cover protection rate  | IP00                  |
| Dimensions (w x h x d) | 38.5 x 51.5 x 20 mm   |
| Weight                 | 50 g                  |
| Connection terminals   | PIN with 2.5 mm grid  |

\*) Insulation strength 500 V AC / 1 minute, galvanic insulation may not be used for safe and unsafe parts separation.

## ORDERING INFORMATION

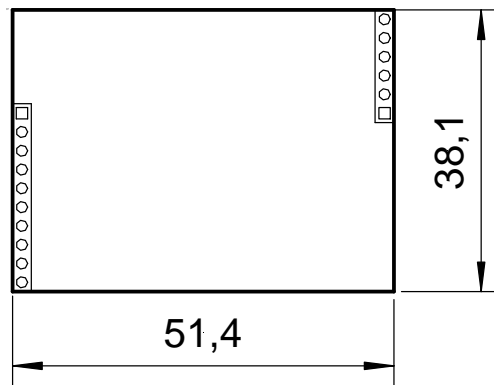
|        |   |
|--------|---|
| AM-CAN | CAN interface communication module, warranty card, data sheet |
|--------|---|

## CONNECTORS WIRING

| J3 connector |        |                      |
|--------------|--------|----------------------|
| PIN          | Signal | Description          |
| 1            | RxCAN  | Output               |
| 2            | TxCAN  | Input                |
| 3            | Vcc    | Power supply +5 V DC |
| 4            | NC     | Not used             |
| 5            | NC     | Not used             |
| 6            | NC     | Not used             |
| 7            | NC     | Not used             |
| 8            | NC     | Not used             |
| 9            | GND    |                      |
| 10           | GND    |                      |

| J1 connector |        |             |
|--------------|--------|-------------|
| PIN          | Signal | Description |
| 1            | GND    | Shield      |
| 2            | CANL   |             |
| 3            | CANH   |             |
| 4            | NC     | Not used    |
| 5            | NC     | Not used    |
| 6            | GND    | Shield      |

## PHYSICAL DIMENSIONS



## LINE TERMINATION

Line termination 120 Ohm is activated by occupation of J2 jumper